

TECHNICAL RIDES

Chayka

Performer:	Tita Iacobelli
Direction:	Natacha Belova y Tita Iacobelli
Music:	Simon Gonzalez
Lighting:	Christian Halkin & Franco Peñaloza
Technician in charge:	Franco Peñaloza

Length show: 60 minutes



TECHNICAL CONTACT

Franco Peñaloza

Telephone: +32 486 545224 (wsp) fpenalozasoto@gmail.com

TEAM

1 ACTRESS
1 SOUND TECHNICIAN
1 LIGHTING TECHNIQUE
1 DIRECTOR

STAGE REQUIREMENTS

Dimensions adaptable according to the place previous notice to Franco Peñaloza.

Proscenium width : 8.5 meters / 28 ft

Stage depth : 7 meters / 22 ft

Stage height : 4,5 meters / 15 ft

The floor surface must be flat, painted in black and it has to allow that a wheelchair moves easily.

Please let us know if the floor is raked. What is its angle.

The back wall must be black and the masking also black in the german style.

A 2 meter rod is needed to hang our curtain (see the light plot).

The company provides the scenography (white curtains, table, chair).

LIGHTS

The presenter will furnish the following items:

30 circuits of 2kW

6 PC of 650 watts (PAR 64 CP61)

11 PC of 1kwatts (PAR 64 CP61)

7 profiles of 1kwatts (angle 30°-53°)

4 par 64 CP62

1 cyclorama asymmetrical 1kwatts

1 lightboard with electronic patch and with the possibility of visualize the circuits and sequences on a screen.

Colours gels:

Lee 128/201/205/249/328, Aluminum tape.

The company provides 1 gobo, 4 snow machines and 1 fan. The snow machines and the fan must be connected to dimmers (see the light plot).

AUDIO

The presenter will furnish the following items:

- 1 digital mixer with the possibility of dynamics processors, reverb, delay and graphic eq for each output. FOH
- 3 way system P.A. with a sound pressure level according to the place.
- Monitors 2 monitor. 1 each side of the stage.

The company provides a wireless microphone.

The lightboard and the audio mixer must be one side of the other, looking front side the stage and with no glass.

DRESSING ROOM

The presenter shall provide a private, secure, lockable, clean, with a mirror and well-light dressing room with good heating, ventilation and air conditioning in close proximity to a bathroom and the stage. Fruits, nuts, almonds cofe and no-gas botteled water.

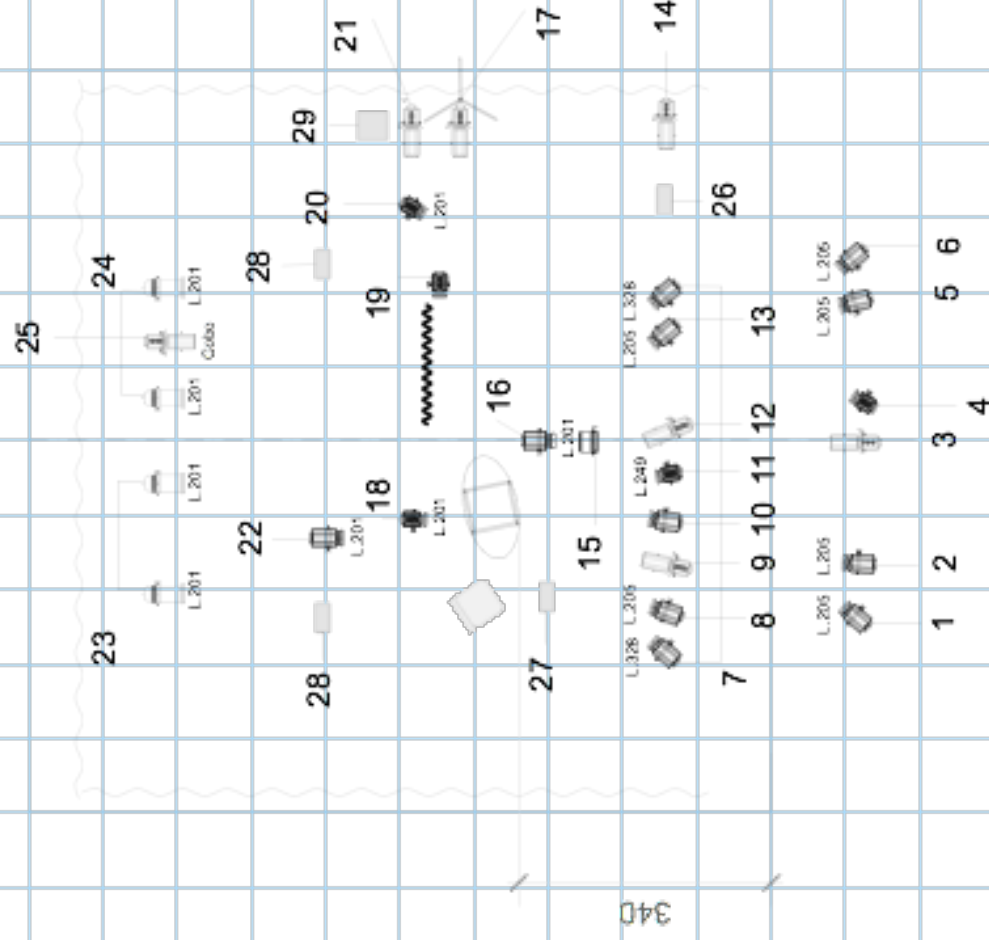
SCHEDULE

The « load-in » of the show requires three work shifts of 4 hours each. two technicians will be needed : one for the lights and one for the audio. The lighting technician must be in the three shifts. The sound technician must be in the first and third shift. The technician of the company will operate the show.

« Load-out » in 1 hour approximate

We would appreciate if you would send us the technical plans of your venue, the list of fixtures of light, the sound equipment and the contact of your technician in charge.

This technical rider is part of the contract. Changes must be talked over in advance with the responsibilities of the company. Thank you for your cooperation.



Tchaïka

Compania Iacobelli-Belova

Franco Penaloza
fpenalozasoto@gmail.com

Christian Halkin
christian.halkin@gmail.com

Janvier 2019 échelle 1/100

29 circuits 2Kw

5 x	PC 650Watts
11 x	PC 1 000Watts
7 x	Découpe 750Watts
4 x	Par64 CP62
1 x	Quartz 1 000Watts
4 x	Machine à neige
1 x	Ventilateur

Amener par la Compagnie